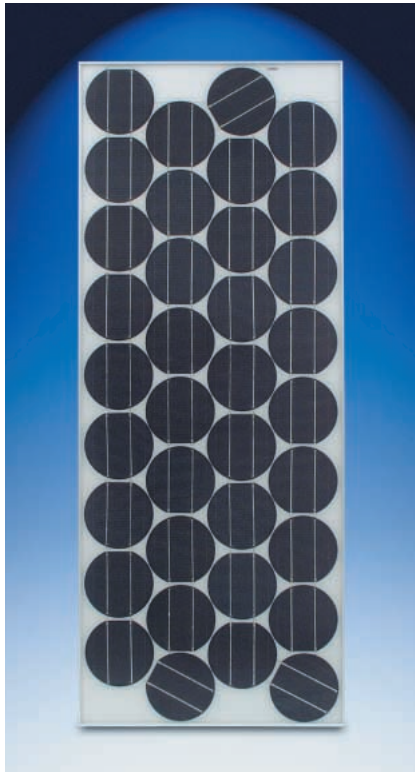


SunWize *SW Series Solar Modules*

TECHNOLOGIES, INC.

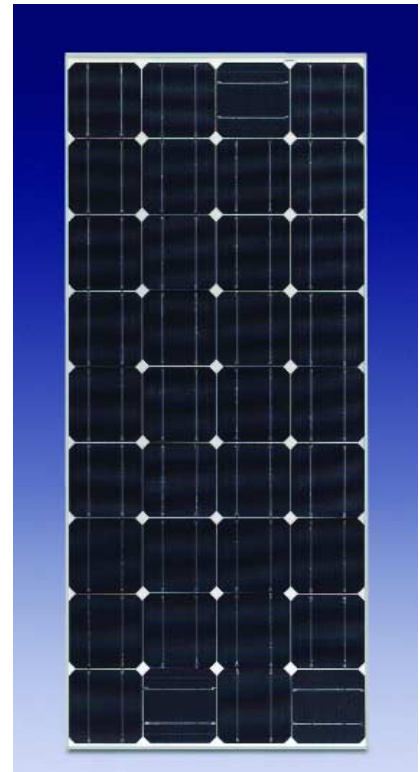


SW85, SW90 and SW95

SunWize® Solar Modules deliver top-quality performance for all photovoltaic applications including rural electrification, water pumping, telemetry, communications, and general battery charging. SunWize modules can be used in single-module and multiple-module installations and are ideal for high voltage grid-tied inverters. Each module consists of 36 solar cells connected in series providing maximum charging power.

FEATURES:

- Single crystalline solar cells are encapsulated and bonded to the glass in multiple layers of ethylene vinyl acetate (EVA) and laminated with a white Tedlar™ backing insuring long life in severe environmental conditions.
 - The glass surface is impact resistant and allows maximum light transmission.
 - A weather resistant junction box accommodates all wiring methods including moisture-tight strain relief connectors and electrical conduit.
 - Pre-drilled mounting holes.
 - Bypass diodes contained within the junction box insure reliable operation.
- Anodized aluminum tubular frames add strength and durability to the modules.
 - SW modules are manufactured to comply with U.S. and international standards, and are factory tested to verify superior performance.
 - All SunWize modules carry a 20-year, 80% power output warranty and are ISPR certified.



SW115 and SW120

Model	Rated Power (Watts)	Rated Voltage (Vmp)	Rated Current (Imp)	Open Circuit Voltage (Voc)	Short Circuit Current (Isc)	Dimensions (inches)	Unit Weight (lbs)
SW85	85	17.4	4.88	21.4	5.7	56.93 x 22.8	23
SW90	90	17.4	5.17	21.4	5.9	56.93 x 22.8	23
SW95	95	17.4	5.46	21.4	6.0	56.93 x 22.8	23
SW115	115	16.7	6.89	21.0	7.7	56.93 x 25.43	26
SW120	120	16.7	7.18	21.0	8.0	56.93 x 25.43	26

Vmp - maximum power voltage (volts)
 Imp - maximum power current (amps)
 Voc - open circuit voltage (volts)
 Isc - short circuit current (amps)

CORPORATE HEADQUARTERS

1155 Flatbush Road, Kingston, NY 12401 • Tel: 845.336.0146 * Fax: 845.336.0457
 email: sunwize@besicorp.com • www.sunwize.com

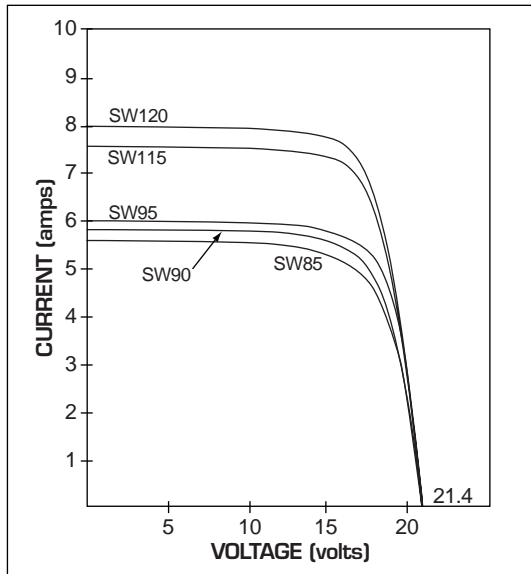
SunWize
 TECHNOLOGIES, INC.

SunWize SW Series Solar Modules

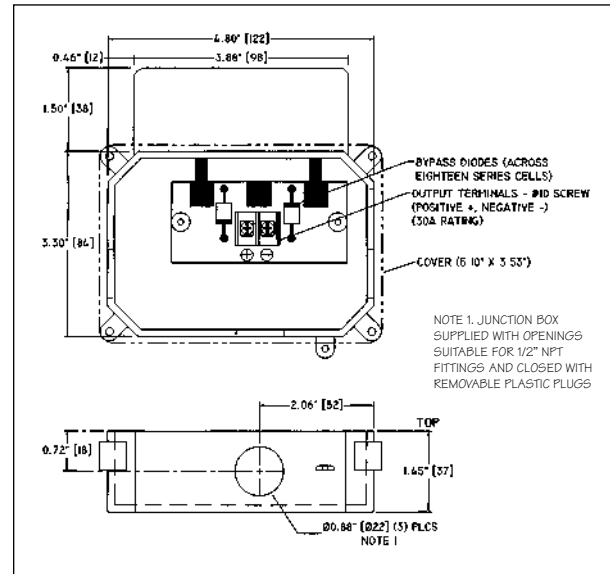
TECHNOLOGIES, INC.

Electrical Characteristics

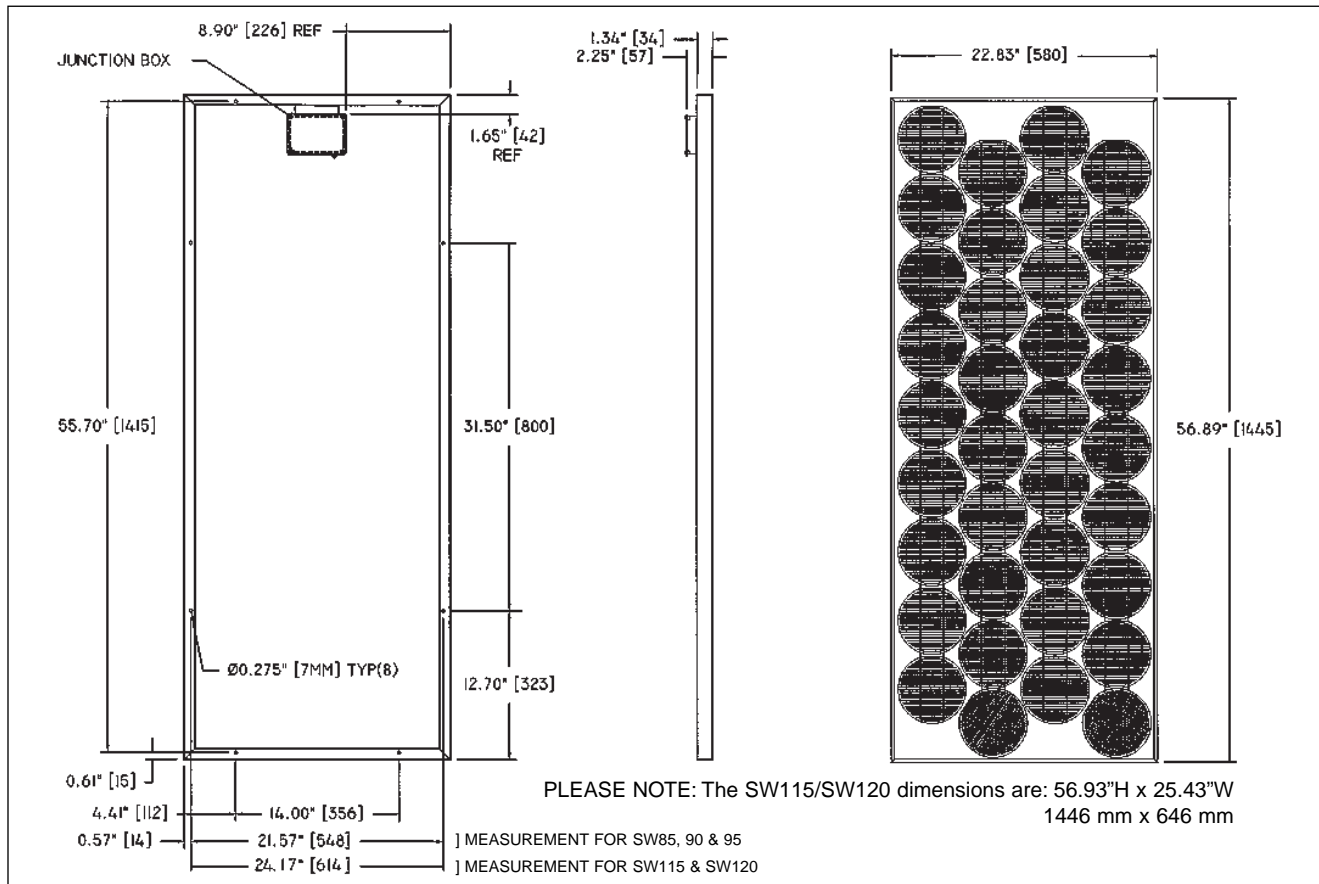
IV Curves



Junction Box details



Mechanical Specifications



CORPORATE HEADQUARTERS

1155 Flatbush Road, Kingston, NY 12401 • Tel: 845.336.0146 * Fax: 845.336.0457
email: sunwize@besicorp.com • www.sunwize.com

SunWize
TECHNOLOGIES, INC.